

PHOTOGRAPHY

Chief Steward: Anne Walmsley

Entry fee: \$1.00 per exhibit and entries in junior classes are free

Prizes for classes 1-24: 1st – \$2.00, 2nd – \$1.00

All exhibits to be received for judging by noon Saturday, 15 February 2025

Photos must be mounted on cardboard with a minimum border of 2cm.

No photos in frames accepted. No exhibit can compete that has previously been awarded a prize at any Gunning Show. Entries must be bona fide work of the exhibitor.

Photos may be taken using a digital camera and/or printed using computer techniques as well as traditional photographs. Maximum size – 30cm x 35cm (including mount).

No professional/ commercial photographers can enter photos.

OPEN SECTION

COLOUR PRINTS

1. Open – any subject
2. Person/people – eg portrait or scene involving people
3. Scene/ Landscape
4. Rural study
5. Animals/birds
6. Night, dawn or dusk
7. Fun photo – does it make you laugh? Then we want it!!
8. Creative digital
9. Botanical flower or plant
10. Sporting (individual photo or series of three in time sequence)
11. Series of 3 – any subject
12. Open – colour photo taken using film photography

CHAMPION OPEN (classes 1-11) – Ribbon and \$10 cash prize donated by the Duncan Family

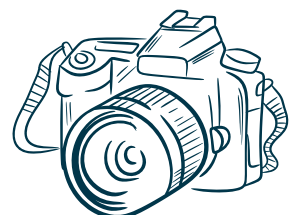
BLACK & WHITE

13. Open – any subject
14. Person/people – eg portrait or scene involving people
15. Open – any subject black and white film photography

NOVICE SECTION – open to anyone who has not won 1st prize at a Gunning Show (excluding in the Junior Section)

16. Open – any subject
17. Open – black and white
18. Person/people – eg portrait or scene involving people
19. Person/people – black and white – eg portrait or scene involving people
20. Scene/ landscape
21. Rural study
22. Animals/birds
23. Night, dawn or dusk
24. Botanical flower or plant
25. Creative digital

CHAMPION NOVICE PHOTO – Ribbon and \$10 cash prize



PHOTOGRAPHY Continued...

JUNIOR SECTION – 12 years & under (free entry)

- 26. Open – any subject
- 27. Person/people – eg portrait or scene involving people
- 28. Animals/birds
- 29. Botanical flower or plant

CHAMPION JUNIOR PHOTO – Ribbon and \$10 cash prize



YOUTH SECTION – 13 to 16 years (free entry)

- 30. Open – any subject
- 31. Person/people – eg portrait or scene involving people
- 32. Animals/birds
- 33. Botanical flower or plant

CHAMPION YOUTH PHOTO – Ribbon and \$10 cash prize

CRAIG SOUTHWELL CHOICE PHOTO – \$5 cash prize

SUPREME PHOTO – Ribbon and \$25 cash prize

PHOTOGRAPHY HINTS

- In most cases a neutral coloured backing cardboard/mount is better than a strongly coloured one as the mount can detract from the overall photo.
- It is always better to have the main element in the photo in focus as blurry images detract from overall presentation.
- In the Portrait/People classes, the human element should be the major element/theme of the photo, not just incidental to the scene.



GUNNING AG & WATER SOLUTIONS

PUMPS & TANKS

HOME & GARDEN

AG & VET CHEMICAL

SHEDS & HARDWARE

STOCK WATER SYSTEMS TRENCHING & EXCAVATION

FERTILISER, SEED AND LIME

STOCKFEED & PET SUPPLIES PROFESSIONAL IRRIGATION DESIGN

PROFESSIONAL AGRONOMY & SOIL MAPPING



📍 63-67 Yass Street, Gunning 📞 4845 1113 📧 sales@gunningagandwatersolutions.com.au

Trading Hours: Monday to Friday – 8:00am to 5:30pm, Saturday – 8:00am to 12:30pm

www.crt.com.au