

# VEGETABLES

Chief Steward: John Shaw

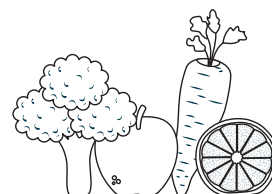
Entry fee: \$1.00 (free entry for junior classes)

Prizes: 1st – \$2.00, 2nd – \$1.00 (unless stated otherwise)

*All entries in this section will be deemed to be donated UNLESS otherwise nominated on the entry form. All exhibits are to be staged by noon, Saturday, 15 February 2025.*

*All exhibits are to be grown by the exhibitor.*

1. Largest Marrow/ Zucchini – Trophy donated by The Walmsley Family
2. Most unusual vegetable – Prize \$10 donated by Kim Dowling
3. Tomato Challenge – 6 heaviest ripe tomatoes (Judged by combined weight)
4. Collection of six kinds of vegetables to be drawn from the following seven kinds: 2 tomatoes, 2 beetroot, 2 apple cucumbers, 2 potatoes, 1 cabbage, 1 marrow, 250g beans.
5. Collection of four kinds of salad vegetables to be drawn from the following eight kinds: 3 tomatoes, 3 beetroot, 1 lettuce, 3 cucumbers, 1 cabbage, 3 radish, 3 onions, 3 carrots.
6. Tomatoes, collection of three varieties, four of each variety, stalks to be attached
7. Tomatoes, four of one variety, stalks to be attached
8. Green Tomatoes, four of one variety, stalks to be attached
9. Tomatoes, small variety, six, stalks to be attached
10. Sweet Corn, two cobs
11. Cabbage, one
12. Lettuce, one
13. Silver beet, bunch of four stalks (to be displayed in clear jar with water)
14. Rhubarb, bunch of four stalks, leaves on and meaty end on (display in clear jar with water)
15. Eggplant, one
16. Beans, stringless, 125gms
17. Beans, any other variety
18. Cucumbers, long variety, two
19. Cucumbers, apple variety, two
20. Beetroot, four
21. Carrots, four medium or long, stalks on – over 15cms
22. Carrots, four short, stalks to be left on – under 15cms
23. Parsnips, bunch of four
24. Onions, four white
25. Onions, four brown
26. Onions, four red
27. Onions, four odourless
28. Onions, four heaviest, any variety, stalks to be removed
29. Marrow, white or cream, vegetable variety, one
30. Marrow, green striped
31. Marrow Zucchini, one
32. Pair Zucchini/ Marrows, with flowers attached (no more than 15cms)
33. Potatoes, white, four (commercial consumption size)
34. Potatoes, any other colour, four (commercial consumption size)
35. Potatoes, three heaviest, no second growth



## VEGETABLES continued...

36. Custart Squash, one
37. Butternut pumpkin, one\*
38. Pumpkin, Golden Nugget\*
39. Pumpkin, Queensland Blue, one\*
40. Pumpkin, any other variety, one\*
41. Giant Pumpkin
42. Collection of five root vegetables, three of each
43. Vegetable not mentioned
44. Potted collection of herbs
45. Any variety of herb potted
46. Capsicum, any variety (pair)

*\*All pumpkins need to be commercial-size*

### **JUNIOR SECTION – 16 years and under**

47. Sweet corn, 2 cobs
48. Best two cucumbers, any variety
49. Best marrow, any kind
50. Best pumpkin or squash
51. Any other vegetable
52. Potatoes, four
53. Tomatoes, four
54. Potted collection of herbs
55. Any variety of herb potted
56. Capsicum, any variety (pair)

**MOST SUCCESSFUL JUNIOR EXHIBITOR – Ribbon and \$10 cash prize**

**MOST SUCCESSFUL EXHIBITOR – Ribbon and \$10 cash prize**

**SUPREME EXHIBIT – Ribbon and \$25 cash prize**

**Donated by the Baines Family in memory of Mr Bevan Baines.**

**IAN WALMSLEY TOMATO CHALLENGE TROPHY – \$10 cash prize**

**Donated by the Walmsley family in member or Mr Ian Walmsley**



### **FRUIT AND VEGETABLE HINTS**

- Do not allow vegetables to over mature, biggest is not always the best. Most vegetables are best picked on the day of judging to ensure a crisp, extra fresh look and touch.
- Density and richness of colour are the number one judging points, with size next, separating otherwise equal exhibits.
- Collections of the one fruit or vegetable should be even in size and shape. A small sample of the same size will score better than a lot of uneven produce.
- Heads, such as cabbage and lettuce, must be dense and firm-hearted .
- Root vegetables must be crisp and bright with no wood in the centre.
- Rhubarb should also be crisp with no sponginess or porosity in the stalks (also a sign of over-maturity or lack of freshness).
- Above all, the entry **MUST** be the produce of the exhibitor's own garden.